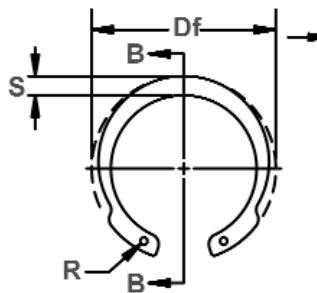




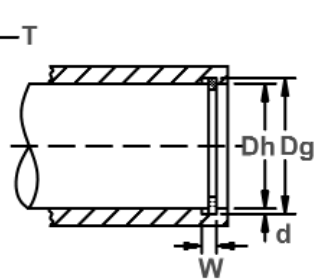
DHI Housing Rings

Axially Assembled, Internal Inverted, Metric

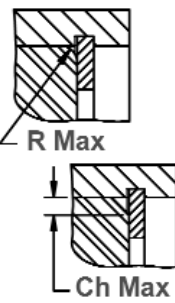
Functions like an DHO ring in a housing/bore, only the lugs are "reversed." This version reduces the distance the lugs of the standard DHO extend into the inner circumference of the housing/bore and allows for another assembly to pass through unimpeded.



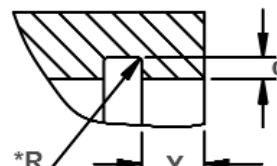
Free Diameter & Ring Measurements With Section B-B



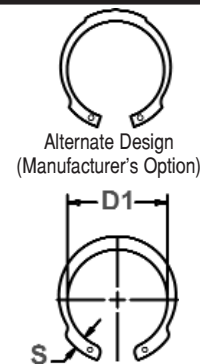
Housing Diameter & Groove Dimensions



Allowable Corner Radius & Chamfer



Exploded Groove Profile & Edge Margin (Y) *The radius "R" on the load side must not exceed 0.1T.



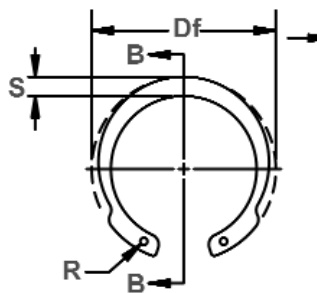
Alternate Design (Manufacturer's Option)

Measuring Free Diameter (Df)
DHI Series $Df = D1 + 2S$

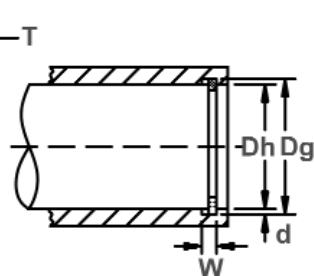
RING NO.	HOUSING DIAMETER	GROOVE SIZE					RING SIZE & WEIGHT						SUPPLEMENTARY DATA					
		DIAMETER		WIDTH	DEPTH		THICKNESS ***		FREE DIAMETER		MAX. SEC.	HOLE DIA.	WEIGHT	EDGE MARGIN	THRUST LOAD Ring	THRUST LOAD Groove	Allowable Rad./Cham.	Max. load w/ R/Ch. Max.
		Dh	Dg	Tol.	W Min.	d	T	Tol.	Df	Tol.	S	Tol.	R Min.	kg/1000	Y Min.	Pr kN	Pg kN	R/Ch. Max.
DHI-12	12	12.6		0.70	0.30	0.60	-0.05	13.1		1.8		1.0	0.25	0.9	1.8	0.75	0.8	1.0
DHI-15	15	15.7	+0.11	0.90	0.35	0.80		16.1		2.0		1.0	0.41	1.0	3.3	1.33	1.0	1.9
DHI-16	16	16.8		1.10	0.40	1.00		17.3		2.1		1.3	0.53	1.2	5.2	1.67	1.0	3.1
DHI-17	17	17.8		1.10	0.40	1.00		18.3	+0.42	2.1		1.3	0.58	1.2	5.8	1.70	1.0	3.0
DHI-18	18	19.0		1.10	0.50	1.00		19.5	-0.13	2.2		1.3	0.62	1.5	6.3	1.78	1.0	3.0
DHI-19	19	20.0		1.10	0.50	1.00		20.5		2.2		1.3	0.66	1.5	6.6	2.50	1.0	2.8
DHI-20	20	21.0	+0.15	1.10	0.50	1.00		21.5		2.3		1.3	0.80	1.5	7.0	2.66	1.0	2.9
DHI-21	21	22.0		1.10	0.50	1.00		22.5		2.4		1.3	0.81	1.5	7.4	2.73	1.0	2.8
DHI-22	22	23.0		1.10	0.50	1.00		23.5		2.4		1.3	0.83	1.5	7.5	2.80	1.0	2.8
DHI-24	24	25.2		1.30	0.60	1.20		25.9		2.8	±0.1	1.5	1.30	1.8	14.5	3.68	1.0	4.8
DHI-25	25	26.2		1.30	0.60	1.20		26.9	+0.42	2.8		1.5	1.40	1.8	14.8	4.00	1.0	5.0
DHI-26	26	27.2	+0.21	1.30	0.60	1.20	-0.06	27.9	-0.21	3.0		1.5	1.50	1.8	15.3	4.17	1.0	5.2
DHI-27	27	28.4		1.30	0.70	1.20		29.1		3.0		1.5	1.53	2.1	15.0	5.00	1.0	5.1
DHI-28	28	29.4		1.30	0.70	1.20		30.1		3.1		1.5	1.80	2.1	15.3	5.10	1.0	5.2
DHI-30	30	31.4		1.30	0.70	1.20		32.1		3.2		1.5	2.03	2.1	14.9	5.50	1.0	5.1
DHI-32	32	33.7		1.30	0.85	1.20		34.4	+0.50	3.3		1.5	2.05	2.5	14.1	7.00	1.0	4.9
DHI-33	33	34.7		1.30	0.85	1.20		35.5	-0.25	3.3		1.5	2.35	2.5	13.8	7.30	1.0	4.8
DHI-34	34	35.7	+0.25	1.60	0.85	1.50		36.5		3.4		1.5	2.95	2.5	24.0	7.50	1.5	6.0
DHI-35	35	37.0		1.60	1.00	1.50		37.8		3.4		1.7	3.20	3.0	26.4	9.20	1.5	6.3
DHI-36	36	38.0		1.60	1.00	1.50		38.8		3.6		1.7	3.23	3.0	27.5	9.70	1.5	6.6
DHI-38	38	40.0		1.60	1.00	1.50		40.8		3.8		1.7	3.68	3.0	28.0	10.20	1.5	6.7

*** FOR PLATED RINGS, ADD 0.05 TO THE LISTED MAXIMUM THICKNESS. MAXIMUM RING THICKNESS WILL BE A MINIMUM OF 0.005 LESS THAN THE LISTED GROOVE WIDTH (W) MINIMUM.

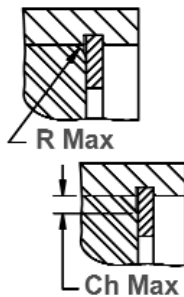
ALL DIMENSIONS IN MILLIMETERS.



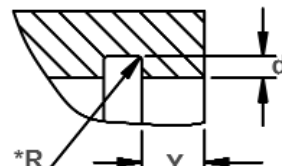
Free Diameter & Ring Measurements With Section B-B



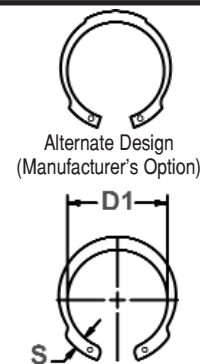
Housing Diameter & Groove Dimensions



Allowable Corner Radius & Chamfer



Exploded Groove Profile & Edge Margin (Y) *The radius "R" on the load side must not exceed 0.1T.



Measuring Free Diameter (Df) DHI Series Df = D1 + 2S

RING NO.	HOUSING DIAMETER	GROOVE SIZE					RING SIZE & WEIGHT						SUPPLEMENTARY DATA					
		DIAMETER		WIDTH	DEPTH	THICKNESS ***	FREE DIAMETER		MAX. SEC.	HOLE DIA.	WEIGHT	EDGE MARGIN	THRUST LOAD Ring	THRUST LOAD Groove	Allowable Rad./Cham.	Max. load w/ R/Ch. Max.		
		Dh	Dg	Tol.	W Min.	d	T	Tol.	Df	Tol.	S	Tol.	R Min.	kg/1000	Y Min.	Pr kN	Pg kN	R/Ch. Max.
DHI-40	40	42.5	+0,25	1,85	1,25	1,75	-0,06	43,5	+0,90	4,2	±0,2	2,0	4,75	3,8	45,5	13,50	2,0	8,4
DHI-42	42	44,5		1,85	1,25	1,75		45,5	-0,39	4,2		2,0	5,20	3,8	45,5	14,10	2,0	8,5
DHI-45	45	47,5		1,85	1,25	1,75		48,5		4,2		2,0	6,00	3,8	44,0	15,00	2,0	8,4
DHI-47	47	49,5		1,85	1,25	1,75		50,5		4,7		2,0	6,50	3,8	45,0	15,80	2,0	8,7
DHI-48	48	50,5	+0,30	1,85	1,25	1,75	-0,07	51,5		4,7	±0,3	2,0	7,00	3,8	48,0	16,00	2,0	9,1
DHI-50	50	53,0		2,15	1,50	2,00		54,2		5,2		2,5	8,50	4,5	69,0	20,00	2,0	13,4
DHI-52	52	55,0		2,15	1,50	2,00		56,2		5,2		2,5	9,00	4,5	66,5	20,80	2,0	13,3
DHI-55	55	58,0		2,15	1,50	2,00		59,2		5,2		2,5	10,00	4,5	66,0	22,20	2,0	13,3
DHI-57	57	60,0		2,15	1,50	2,00		61,2	+1,10	5,2		2,5	10,25	4,5	65,0	23,00	2,0	13,1
DHI-58	58	61,0		2,15	1,50	2,00		62,2	-0,46	5,2		2,5	10,50	4,5	64,0	23,30	2,0	12,9
DHI-60	60	63,0		2,15	1,50	2,00		64,2		5,2		2,5	11,25	4,5	62,0	24,20	2,0	12,7
DHI-62	62	65,0		2,15	1,50	2,00		66,2		5,2		2,5	11,75	4,5	60,0	25,00	2,0	12,3
DHI-65	65	68,0		2,65	1,50	2,50		69,2		5,7		2,5	16,25	4,5	122,0	25,80	2,5	20,6
DHI-67	67	70,0		2,65	1,50	2,50		71,5		5,7		2,5	17,30	4,5	122,0	26,80	2,5	20,8
DHI-68	68	71,0	2,65	1,50	2,50	72,5		5,7	2,5	17,75	4,5	123,0	27,20	2,5	21,0			
DHI-72	72	75,0	2,65	1,50	2,50	76,5		6,0	2,5	19,60	4,5	119,0	28,80	2,5	20,8			
DHI-80	80	83,5	2,65	1,75	2,50	85,5		6,0	±0,3	2,5	22,90	5,3	110,0	37,40	2,5	19,6		
DHI-85	85	88,5	3,15	1,75	3,00	90,5	+1,30	6,6	3,0	30,00	5,3	176,0	39,70	3,0	27,2			
DHI-90	90	93,5	3,15	1,75	3,00	95,5	-0,54	6,6	3,0	33,00	5,3	169,0	42,00	3,0	26,6			
DHI-95	95	98,5	3,15	1,75	3,00	100,5		7,4	3,0	37,50	5,3	168,0	43,50	3,0	27,0			
DHI-100	100	103,5	3,15	1,75	3,00	105,5		7,4	3,0	41,90	5,3	165,0	46,70	3,0	26,8			

*** FOR PLATED RINGS, ADD 0.05 TO THE LISTED MAXIMUM THICKNESS. MAXIMUM RING THICKNESS WILL BE A MINIMUM OF 0.005 LESS THAN THE LISTED GROOVE WIDTH (W) MINIMUM.

ALL DIMENSIONS IN MILLIMETERS.

HARDNESS RANGES: CARBON STEEL RINGS (SAE 1060-1090)

RING TYPE	SIZE RANGE	HARDNESS		
		VICKERS	ROCKWELL	
			HRC	LOWER SCALE*
DHI	12-22	470-580	47-54	66-72 HR30N
	23-48	470-580	47-54	-
	50-100	435-530	44-51	-

*WHERE APPLICABLE