

Poly-Toggle® Plastic Hollow Wall Anchor

PRODUCT DESCRIPTION

The Poly-Toggle is a screw actuated hollow wall anchor for use in paneling, wallboard, and solid masonry. The Poly-Toggle anchor is available in 6 sizes to match the most common wall thicknesses of hollow base materials. In solid base materials, the anchor can be used by removing the outer wings.

FEATURES AND BENEFITS

- Allows for fixture and screw removal and re-anchoring
- Federal GSA Specification – Meets the descriptive requirements of FF-B-588D, Type IV (superseded)

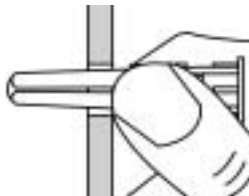
MATERIAL SPECIFICATIONS

Anchor Component	Component Material
Anchor Body	Engineered Plastic
Screw	Carbon Steel – ANSI 18.6.4
Screw Plating	ASTM B633, SC1, Type III, (Zn/Fe 5)

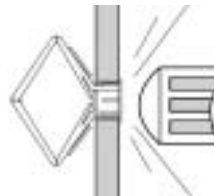
INSTALLATION SPECIFICATIONS

Dimension	Anchor Size					
	Mini	Short	Medium	Long	Extra Long	Super Long
ANSI Drill Bit Size, d_{bit} (in.)	5/16	5/16	5/16	5/16	5/16	5/16
Minimum Screw Length (in.)	1	1 1/4	1 1/4	1 1/2	1 3/4	2
Screw Size Range	No. 6-12	No. 6-12	No. 6-12	No. 6-12	No. 6-12	No. 6-12
Flange Size (in.)	29/64	1/2	1/2	1/2	1/2	1/2
Embed. (Solid Materials) (in.)	5/8	1 1/8	1 1/4	1 3/8	1 1/2	1 3/4

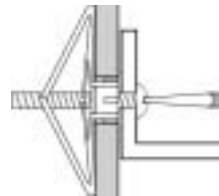
Installation Guidelines



Drill 5/16" diameter hole through base material. Select the proper size Poly-Toggle based on the wall thickness. Squeeze the Poly-Toggle flat and push into the hole.



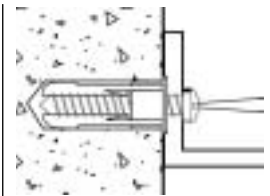
Tap the Poly-Toggle through the wall until the flange is seated flush against the outer wall.



Position the fixture, insert the screw through the fixture into the Poly-Toggle, and tighten until it feels secure.



Solid Base Materials – For installations in solid base materials, break off the outer wings.



Squeeze the inner wings flat, and insert the Poly-Toggle into the anchor hole. Insert the screw through the fixture and tighten.

SECTION CONTENTS Page No.

General Information	288
Material Specifications	288
Installation Specifications	288
Performance Data	289
Ordering Information	289



Poly-Toggle

ANCHOR MATERIALS

Engineered Plastic

ANCHOR SIZE RANGE (TYP.)

No. 6 to No. 12
Wall Thickness from 1/8" to 1"

SUITABLE BASE MATERIALS

Solid Base Materials
Wallboard
Hollow Concrete Masonry

PERFORMANCE DATA

Ultimate Load Capacities for Poly-Toggle in Wallboard and Concrete Block^{1,2}

Anchor Size	Drill Bit Diameter <i>d_{bit}</i> in. (mm)	Wall Thickness in. (mm)	Wallboard				Concrete Block			
			Ultimate Load		Allowable Load		Ultimate Load		Allowable Load	
			Tension lbs. (kN)	Shear lbs. (kN)	Tension lbs. (kN)	Shear lbs. (kN)	Tension lbs. (kN)	Shear lbs. (kN)	Tension lbs. (kN)	Shear lbs. (kN)
Mini	5/16 (7.9)	1/8 (3.2)	120 (0.5)	100 (0.5)	30 (0.1)	25 (0.1)	–	–	–	–
Short	5/16 (7.9)	3/8 (9.5)	135 (0.6)	165 (0.7)	35 (0.2)	40 (0.2)	240 (1.1)	220 (1.0)	60 (0.3)	55 (0.2)
Medium	5/16 (7.9)	1/2 (12.7)	150 (0.7)	220 (1.0)	40 (0.2)	55 (0.2)	280 (1.3)	230 (1.0)	70 (0.3)	60 (0.3)
Long	5/16 (7.9)	5/8 (15.9)	170 (0.8)	250 (1.1)	45 (0.2)	65 (0.3)	350 (1.6)	230 (1.0)	90 (0.4)	60 (0.3)
Extra Long	5/16 (7.9)	3/4 (19.1)	180 (0.8)	250 (1.1)	45 (0.2)	65 (0.3)	400 (1.8)	240 (1.1)	100 (0.5)	60 (0.3)
Super Long	5/16 (7.9)	1 (25.4)	220 (1.0)	250 (1.1)	55 (0.2)	65 (0.3)	450 (2.0)	250 (1.1)	115 (0.5)	65 (0.3)

1. The values listed above are ultimate load capacities which should be reduced by a minimum safety factor of 4.0 or greater to determine the allowable working load.
 2. The load capacities for this product depend on the integrity of the base material in which it is installed. The anchor is recommended for light duty static applications where holding power is not a critical factor. This anchor is not recommended for use in overhead applications.

ORDERING INFORMATION

Poly-Toggle

Cat. No.	Anchor Size	Wall Thickness	Screws	Standard Box	Standard Carton	Wt./ 1,000
2302	Mini	1/8"	–	100	1,000	3
2303	Short	3/8"	–	100	1,000	5
2304	Medium	1/2"	–	100	1,000	5
2305	Long	5/8"	–	100	1,000	6
2306	Extra Long	3/4"	–	100	1,000	7
2307	Super Long	1"	–	100	1,000	8



WALL ANCHORS